

# WHOLESALE TO THE PUBLIC



INSTALLATION  
AVAILABLE  
IN HOME DESIGN

CALL FOR A FREE DESIGN  
FROM ONE OF OUR DESIGNERS

**941-525-6282**



## SHAKER WHITE

Classically beautiful, our versatile **Shaker White** cabinets provide timeless luxury in traditional, transitional and contemporary style homes. Their sleek simplicity satisfies even the most discerning of tastes.



### FEATURES AND BENEFITS

- Shaker-style frameless cabinet for streamlined look.
- Full overlay door and drawer fronts with a robust mortise and tenon construction.
- Multi-layered painted doors and drawers with solid wood frames and flat recessed MDF center panels.
- 5/8" solid natural wood drawer box with four dovetail joints, the strongest joint in woodworking.
- Concealed under-mount drawer glides with full extension for complete access to the drawer contents.
- The 6-way adjustable soft-close mechanism allows drawers and doors to close smoothly and silently.
- Concealed quick-release door hinges for swift and easy door removal, great for appliance maintenance and cleaning.
- 3/4" furniture-grade plywood box construction, is thicker than industry norms.
- Metal corner brackets provide for a stable and longlasting foundation.
- Base cabinets have 15-3/4" deep shelves with 4-sided edge-banding and metal clips.
- Matching interior and exterior finish for a flawless look.
- KMCA approved, meeting and exceeding high industry standards for quality and durability.
- CARB 2 compliant certified to meet reduced emission standards for a safe environment.
- Available with a glass front option (glass and clips not included).
- Decorative trims and molding are available.

### INSTALLATION AND MAINTENANCE

- Suitable for all indoor room applications.
- Easy to clean. Cabinets can be cleaned with water and mild soap.



## IMPERIAL BLUE

Crisp, clean lines, and enduring good looks are the hallmarks of **Imperial Blue** cabinets. These cabinets feature a wide 3" Shaker-style framed door with full overlay for a simplistic and uncluttered look. The dynamic color takes center stage, complementing both traditional and contemporary interiors.



### FEATURES AND BENEFITS

- Shaker-style frameless cabinet for a streamlined look.
- Full overlay door and drawer fronts with a robust mortise and tenon construction.
- Multi-layered painted door and drawer with solid wood frame and a flat recessed MDF center panel.
- 5/8" solid natural wood drawer box with four dovetail joints, the strongest joint in woodworking.
- Concealed under-mount drawer glides with full extension for complete access to the drawer contents.
- The 6-way adjustable soft-close mechanism allows drawers and doors to close smoothly and silently.
- Concealed quick-release door hinges for swift and easy door removal, great for appliance maintenance and cleaning.
- 3/4" furniture-grade plywood box construction, thicker than industry norms.
- Metal corner brackets provide for a stable and longlasting foundation.
- CARB 2 compliant certified to meet reduced emission standards for a safe environment.
- Base cabinets have 15-3/4" deep shelves with 4-sided edge-banding and metal clips.
- Matching interior and exterior finish for a flawless look.
- KMCA approved, meeting and exceeding high Industry standards for quality and durability.
- Available with a glass front option (glass and clips not included).
- Decorative trims and molding are available.

### INSTALLATION AND MAINTENANCE

- Suitable for all indoor room applications.
- Easy to clean. Cabinets can be cleaned with water and mild soap.



## MADURO

Maduro cabinets honor a graceful, classic and distinctly American style. The nutmeg hue enhances the beauty of the cabinets. **Maduro** is a well-crafted cabinet with a variety of features for an inspired living space.

### FEATURES AND BENEFITS

- Frameless cabinets with raised panel doors for classical styling.
- Full overlay door and drawer fronts with a robust mortise and tenon construction.
- Multi-layered stained doors and drawers with solid wood frames and decorative solid wood center panels.
- 5/8" solid natural wood drawer box with four dovetail joints, the strongest joint in woodworking.
- 3/4" furniture-grade plywood box construction, thicker than industry norms
- Concealed under-mount drawer glides with full extension for complete access to the drawer contents.
- The 6-way adjustable soft-close mechanism allows drawers and doors to close smoothly and silently.
- Concealed quick-release door hinges for swift and easy door removal, great for appliance maintenance and cleaning.
- KMCA approved, meeting and exceeding high industry standards for quality and durability.
- Metal corner brackets provide for a stable and longlasting foundation.
- Base cabinets have 15-3/4" deep shelves with 4-sided edge-banding and metal clips.
- CARB 2 compliant certified to meet reduced emission standards for a safe environment.
- Available with a glass front option (glass and clips not included).
- Decorative trims and molding are available.

### INSTALLATION AND MAINTENANCE

- Suitable for all indoor room applications.
- Easy to clean. Cabinets can be cleaned with water and mild soap.



## PEARL WHITE

We've brought white to a sumptuous new level with the lustrous **Pearl White**. These shaker-style cabinets embody classical styling with understated elegance and modern sophistication.



### FEATURES AND BENEFITS

- Shaker-style frameless cabinet for streamlined look.
- Full overlay door and drawer fronts with a robust mortise and tenon construction.
- Multi-layered painted doors and drawers have solid wood frames and flat recessed MDF center panels.
- 5/8" solid natural wood drawer box with four dovetail joints, the strongest joint in woodworking.
- Concealed under-mount drawer glides with full extension for complete access to the drawer contents.
- The 6-way adjustable soft-close mechanism allows drawers and doors to close smoothly and silently.
- Concealed quick-release door hinges for swift and easy door removal, great for appliance maintenance and cleaning.
- 3/4" furniture-grade plywood box construction, is thicker than Industry norms.
- Metal corner brackets provide for a stable and long-lasting foundation.
- Base cabinets have 15-3/4" deep shelves with 4-sided edgebanding and metal clips.
- Matching Interior and exterior finish for a flawless look
- KMCA approved, meeting and exceeding high Industry standards for quality and durability.
- CARB 2 compliant certified to meet reduced emission standards for a safe environment.
- Available with a glass front option (glass and clips not included).
- Decorative trims and molding are available.

### INSTALLATION AND MAINTENANCE

- Suitable for all indoor room applications.
- Easy to clean. Cabinets can be cleaned with water and mild soap



## STORM GRAY

Sleek and clean, **Storm Gray** cabinets create a look that epitomizes the modern kitchen. These cabinets feature a wide 3" Shaker-style framed door with full overlay for an uncluttered look. The soothing, rich color of Storm Gray will create a relaxed urban vibe in any room.

### FEATURES AND BENEFITS

- Shaker-style frameless cabinet for a streamlined look.
- Full overlay door and drawer fronts with a robust mortise and tenon construction.
- Multi-layered painted door and drawer with solid wood frame and a flat recessed MDF center panel.
- 5/8" solid natural wood drawer box with four dovetail joints, the strongest joint in woodworking.
- CARB 2 compliant certified to meet reduced emission standards for a safe environment.
- Concealed under-mount drawer glides with full extension for complete access to the drawer contents.
- The 6-way adjustable soft-close mechanism allows drawers and doors to close smoothly and silently.
- Concealed quick-release door hinges for swift and easy door removal, great for appliance maintenance and cleaning.
- 3/4" furniture-grade plywood box construction, thicker than industry norms.
- Decorative trims and molding are available.
- Metal corner brackets provide for a stable and long-lasting foundation.
- Base cabinets have 15-3/4" deep shelves with 4-sided edge-banding and metal clips.
- Matching interior and exterior finish for a flawless look.
- KMCA approved, meeting and exceeding high industry standards for quality and durability.
- Available with a glass front option (glass and clips not included).

### INSTALLATION AND MAINTENANCE

- Suitable for all indoor room applications.
- Easy to clean. Cabinets can be cleaned with water and mild soap.



## CLASSIC WHITE

Classical, stylish, and functional, this superb white cabinet will dazzle any kitchen, bathroom, or personal library with its correct form and intricate raised panel door detail.



### FEATURES AND BENEFITS

- Frameless cabinets with raised panel doors for classical styling.
- Full overlay door and drawer fronts with a robust mortise and tenon construction.
- Multi-layered painted doors and drawers with solid wood frames and decorative MDF center panel.
- 5/8" solid natural wood drawer box with four dovetail joints, the strongest joint in woodworking.
- Concealed under-mount drawer glides with full extension for complete access to the drawer contents.
- The 6-way adjustable soft-close mechanism allows drawers and doors to close smoothly and silently.
- Concealed quick-release door hinges for swift and easy door removal, great for appliance maintenance and cleaning.
- 3/4" furniture-grade plywood box construction, thicker than industry norms.
- Metal corner brackets provide for a stable and longlasting foundation.
- Base cabinets have 15-3/4" deep shelves with 4-sided edge-banding and metal clips.
- Matching interior and exterior finish for a flawless look. KMCA approved, meeting and exceeding high industry standards for quality and durability.
- CARB 2 compliant certified to meet reduced emission standards for a safe environment.
- Available with a glass front option (glass and clips not included).
- Decorative trims and molding are available.

### INSTALLATION AND MAINTENANCE

- Suitable for all indoor room applications.
- Easy to clean. Cabinets can be cleaned with water and mild soap.



## STYLE AND CONSTRUCTION







## BOLD AND DRAMATIC WITH UNDENIABLE APPEAL

The Urban Collection is masterfully crafted with the utmost attention to detail. Whether it's subtle textures or bold arousing colors, each adds an intriguing depth and visual interest to a room.



### DURABLE CONSTRUCTION

The 3/4" furniture-grade plywood box construction is 50% thicker than industry standards and features a super durable TFL (thermally fused laminate) finish.



### INNOVATIVE TECHNOLOGY

Resin based TFL is permanently heat bonded to the substrate; it will not peel or fade and has superior impact resistance.



### DOORS MADE IN THE USA

Discover the excellence of American-made cabinetry. Urban doors are manufactured in Tampa, Florida with materials sourced from American companies.



### 10 YEAR WARRANTY

Assures the cabinetry you are buying is of good quality and without manufacturing defects, for years of worryfree enjoyment.



### EASY TO CLEAN

Easy-to-clean surfaces means you spend more time enjoying your cabinetry and less time cleaning them.



### CARB2 CERTIFICATION

Carb2 compliant means the cabinetry has met and exceeded the strict standards for formaldehyde emissions.

# CURATED **CABINET COLOR**

The Urban Collection is offered in wood grains, rich solids, high gloss and organic concrete color options for an edgy, sophisticated look.

## TREND TEXTURE



Concrete Gray



Natural Oak

## WOOD GRAIN



Shoreline

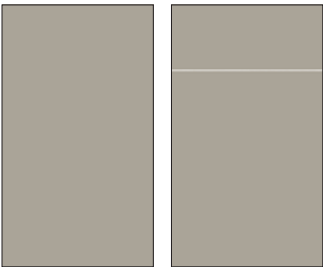


Umbria

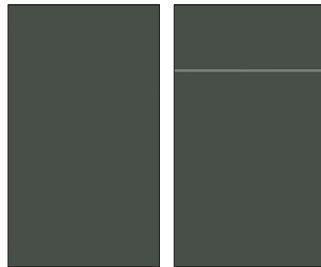


Black Forest

## SOLIDS



Stone Grey

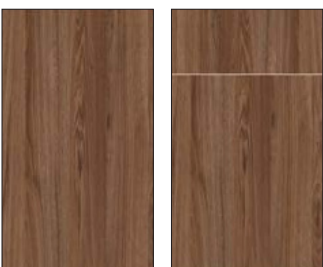


Emerald

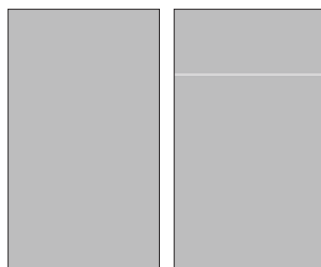


Raven

## HIGH GLOSS



Bayport



Harbor Gray



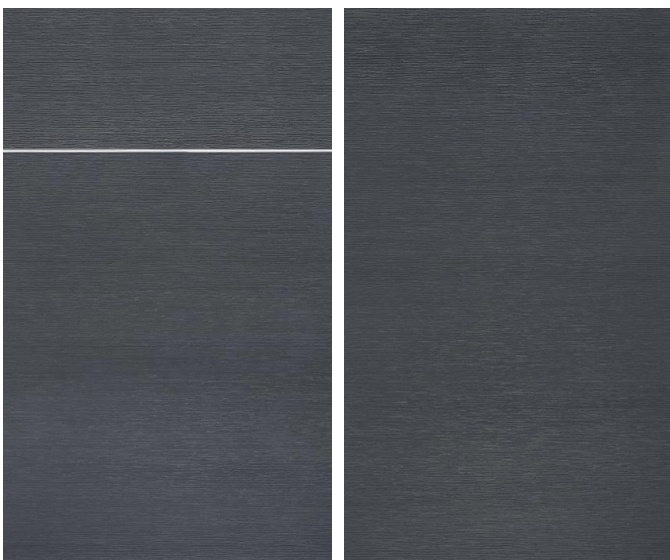
Ultra White

Color accuracy is not exact on a digital print or computer screen. Request a sample before placing an order.

# OUTDOOR CABINETS

## FEATURES AND BENEFITS

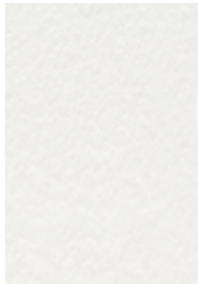
- Standard kitchen base cabinet height achieved with adjustable from 34" minimum to 35.875" maximum
- Wall cabinet depths are standard 12.75" and 24.75", which includes the door.
- Base cabinet depths are 24.75", with base depths at 27.75" and 30.75", which includes the door.
- Solid uniform color and surface allow minor scratches to go virtually unnoticed.
- Low-maintenance, easy to clean, Cabinets never need sanding or painting
- Fully assembled and ready to install with minimal tools and hardware
- Lifetime limited warranty for years of worry free use.
- Eco-friendly with no toxic emission. Cabinet can be recycled at the end of their life-cycle.



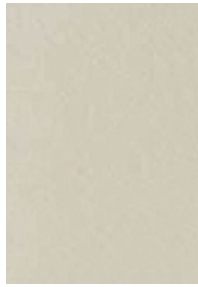
## SOLID MATTE



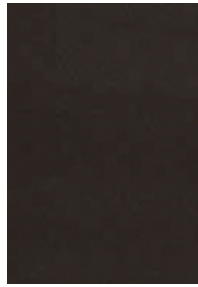
Black Jack



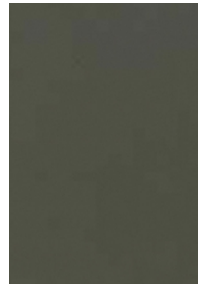
Dove



Dune



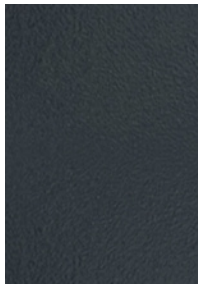
Heartstone



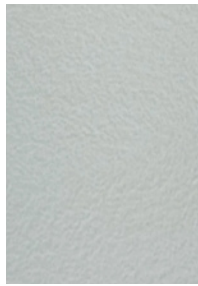
Mica



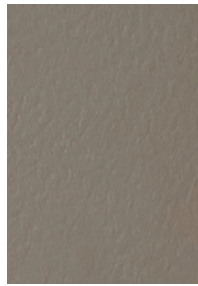
Slate Gray



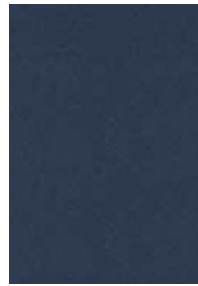
Charcoal Gray



Dolphin Gray



Nutmeg

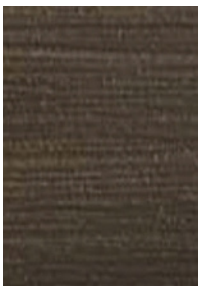


Symphony

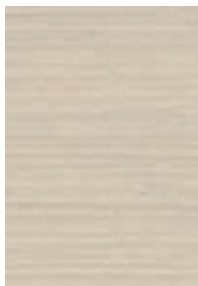
## DECOGRAIN



Black Jack

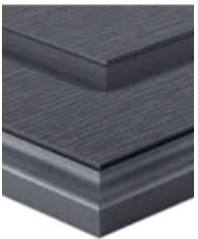


Dove



Dune

## EDGE PROFILES



Regent

DURABILITY AND **STYLE LIVES HERE**



DURABILITY AND **STYLE LIVES HERE**





**You're  
retired.  
Your  
money  
isn't.**

Let's work together to find the right strategy to help keep you on track.

Call or email me today to get started.



**Sherry L Brenneman, CFP®**

Financial Advisor

2468 Laurel Rd E

North Venice, FL 34275-3204

**941-375-2010**



We are a single doctor private practice located in the heart of Sarasota. Dr. Mario Romero has been serving his patients for over 28 years and prides himself of “saving teeth”, one restoration at a time.

Schedule your appointment calling: **(941) 922-1504**

Address: **3900 Clark Rd. Bldg. S, Sarasota, FL 34233**

You can also visit us at: **[www.dentistry180.com](http://www.dentistry180.com)**

Local  
Postal Customer

PRSR STD  
ECRWSS  
U.S. POSTAGE  
PAID  
EDDM Retail

